



UNIVERSITY OF CAMBRIDGE INTERNATIONAL EXAMINATIONS  
General Certificate of Education Advanced Subsidiary Level and Advanced Level

---

**GEOGRAPHY**

**9696/13**

Paper 1 Core Geography

**October/November 2010**

INSERT

**3 hours**

---

**READ THESE INSTRUCTIONS FIRST**

This Insert contains all the Figures referred to in the questions.

---

This document consists of **7** printed pages and **1** blank page.



CANDIDATE  
NAMECENTRE  
NUMBER

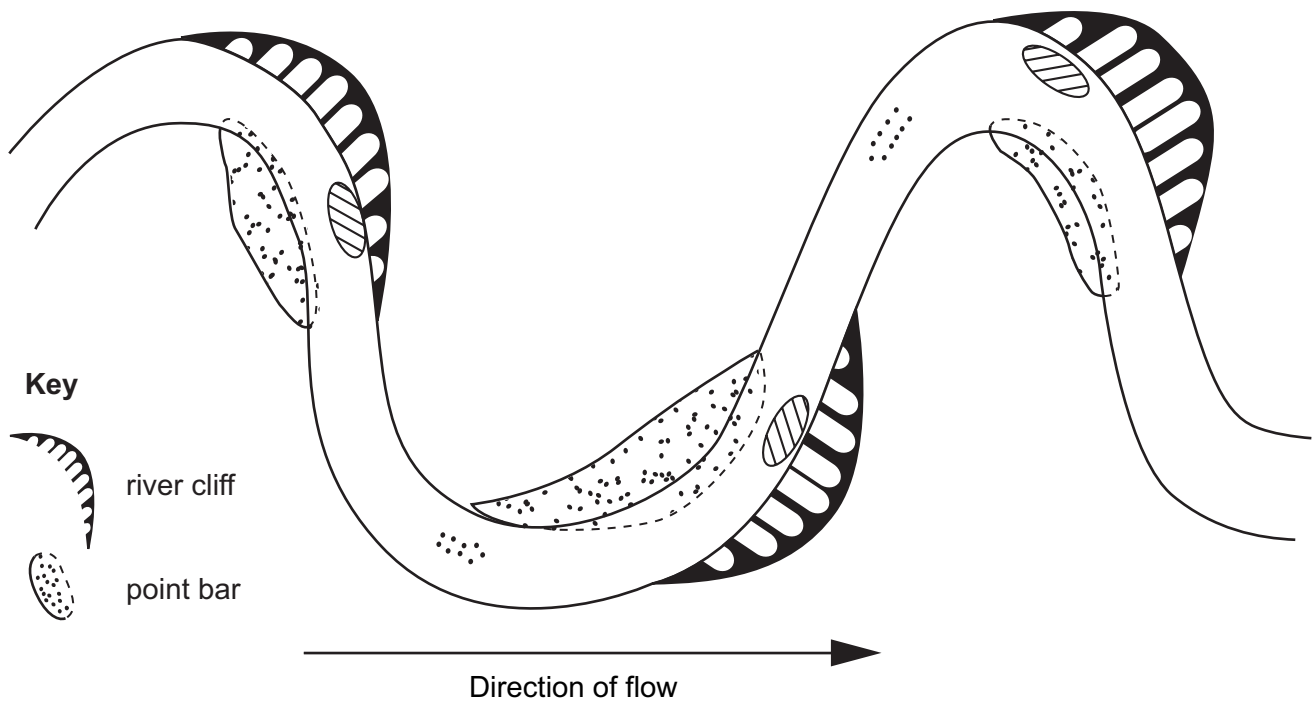
--	--	--	--	--

CANDIDATE  
NUMBER

--	--	--	--

Fig. 1 for Question 1

## A meandering river channel



If you have answered Question 1, attach this page to your Answer Booklet/Paper at the end of the examination.

Fig. 2 for Question 2

Some possible consequences of global warming in North and South America

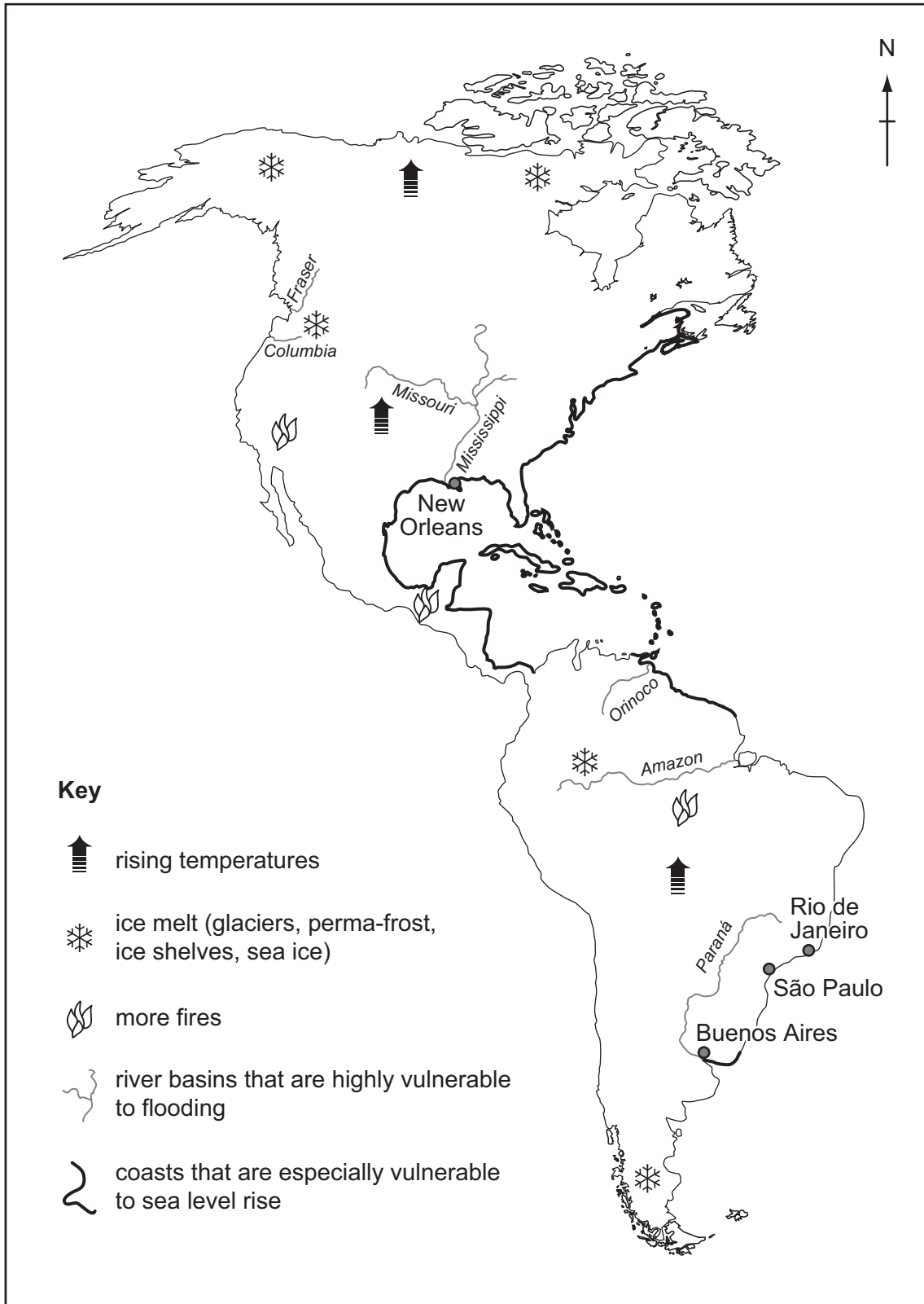


Fig. 3 for Question 3

Two types of mass movement

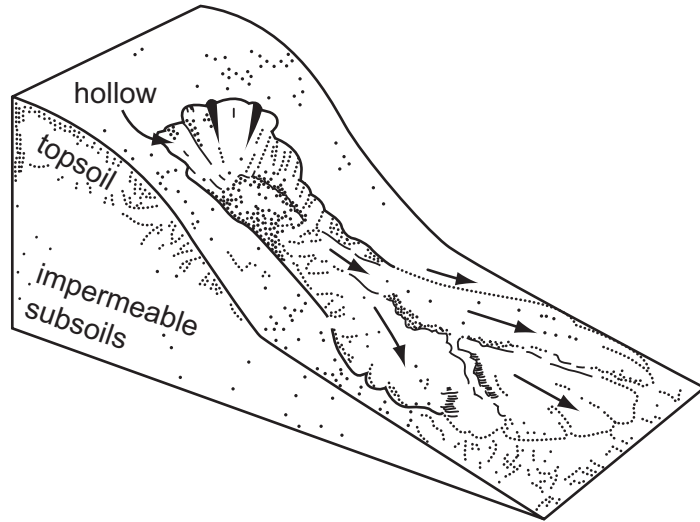


Fig. 3A

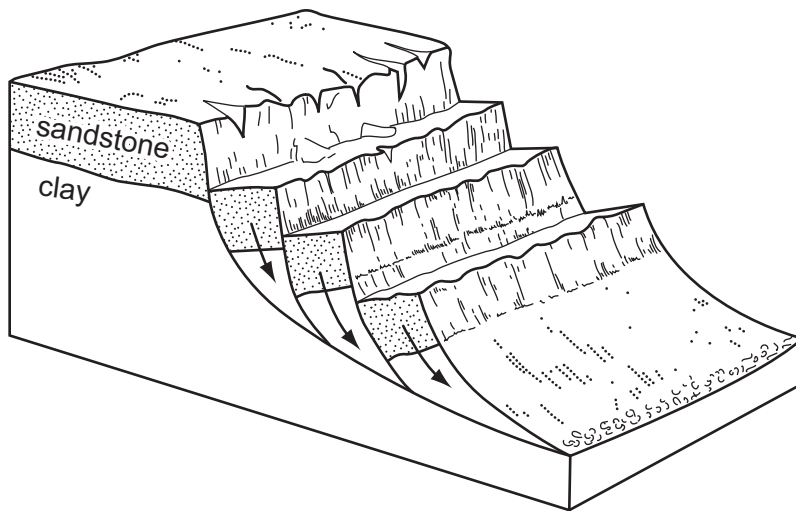


Fig. 3B

Fig. 4 for Question 4

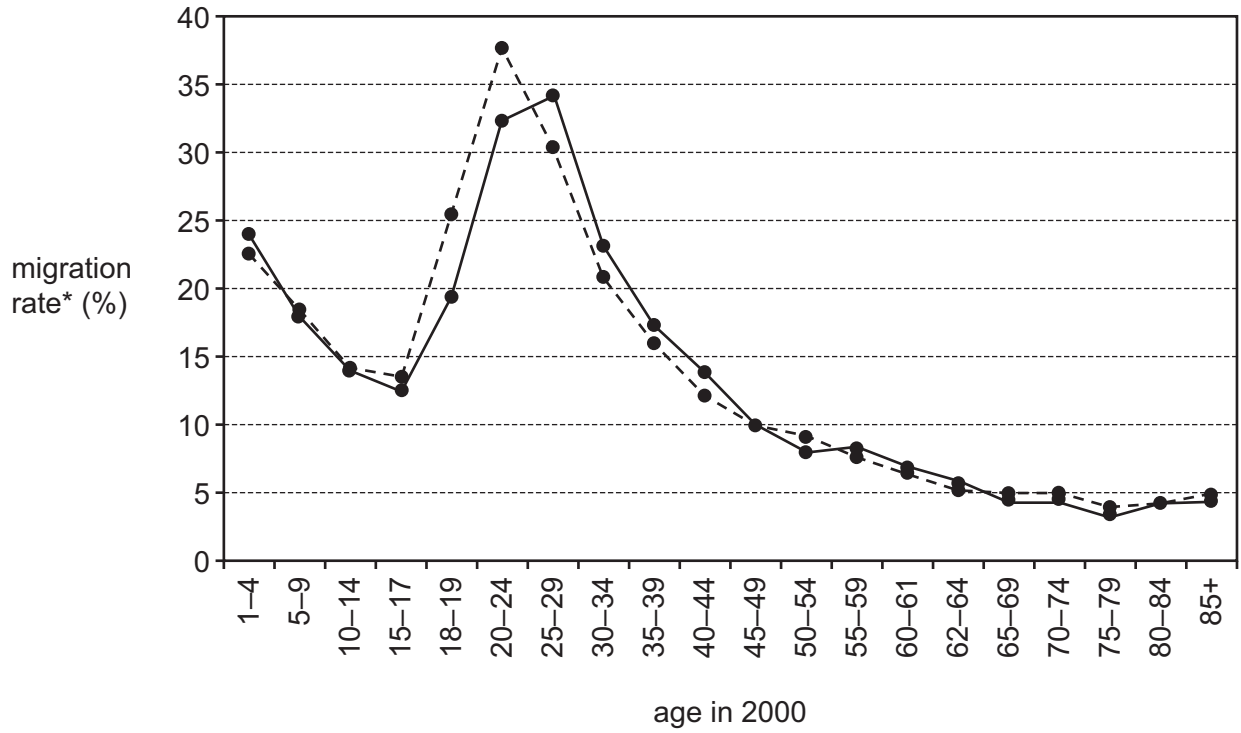
Family planning poster from Bolivia, an LEDC in South America



The headline reads 'Family planning is the right of everyone'.

Fig. 5 for Question 5

## Age and the rate of migration, USA, 2000



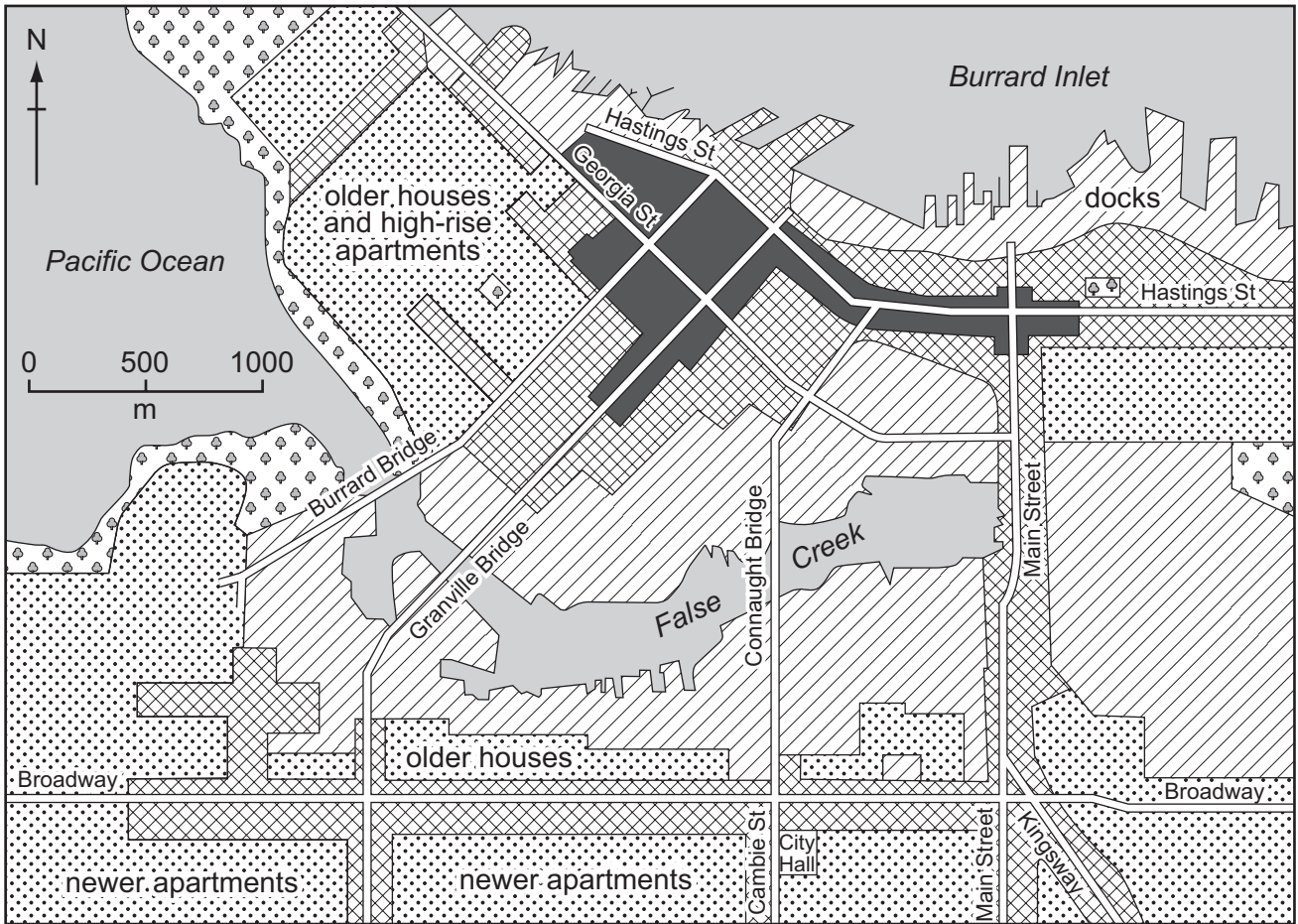
\*migration rate is the percentage of people who moved in one year

**Key**

- males
- females

Fig. 6 for Question 6

Land-use in central Vancouver, Canada



Key

-  CBD core
-  shops and offices
-  industry
-  housing
-  park/recreational area
-  water
-  main road

**BLANK PAGE**

---

Permission to reproduce items where third-party owned material protected by copyright is included has been sought and cleared where possible. Every reasonable effort has been made by the publisher (UCLES) to trace copyright holders, but if any items requiring clearance have unwittingly been included, the publisher will be pleased to make amends at the earliest possible opportunity.

University of Cambridge International Examinations is part of the Cambridge Assessment Group. Cambridge Assessment is the brand name of University of Cambridge Local Examinations Syndicate (UCLES), which is itself a department of the University of Cambridge.